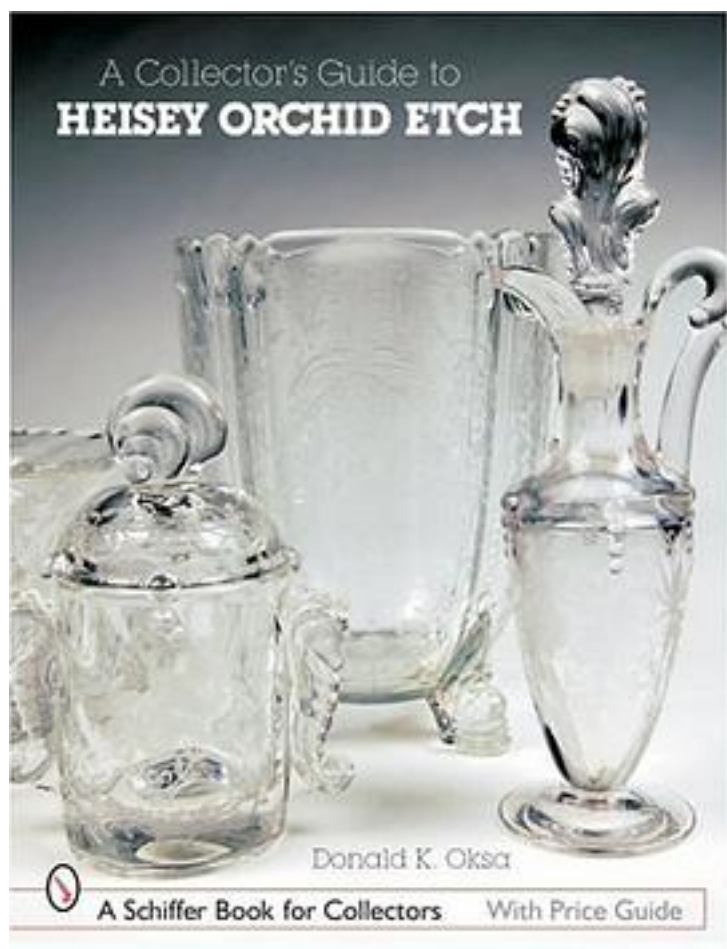


A Collector's Guide to Heisey Orchid Etch



[A Collector's Guide to Heisey Orchid Etch_下载链接1](#)

著者:Donald R. Oksa

出版者:Schiffer Pub Ltd

出版时间:2006-8

装帧:Pap

isbn:9780764325144

The Heisey Glass Company introduced the beautiful Orchid Etch pattern (507) in 1940. It was a huge hit and became one of Heisey's most admired and successful etched designs, one of three remaining designs when Heisey closed its doors in 1957. Because

Orchid was an etching pattern, it is found on a wide variety of Heisey shapes and designs, from stemware to serving pieces, and candlesticks to boxes. Among the Heisey lines on which Orchid etch was used are Cascade (142), Princess (5089), Waverly (1519), Empress (1401), Fern (1495), and Heirloom (5026). The beauty of the Orchid etch pattern has attracted many collectors since its inception, and now, at last, there is a book dedicated to it. With over 260 pieces illustrated, most with wonderful color photographs, the broad range of Orchid etching is covered. A complete description is given for each piece, which includes not only the shape, but the dimensions, and the current value. Heisey collectors and all who appreciate the beauty of glass will love this new book.

作者介绍:

目录:

[A Collector's Guide to Heisey Orchid Etch_下载链接1](#)

标签

评论

[A Collector's Guide to Heisey Orchid Etch_下载链接1](#)

书评

[A Collector's Guide to Heisey Orchid Etch_下载链接1](#)