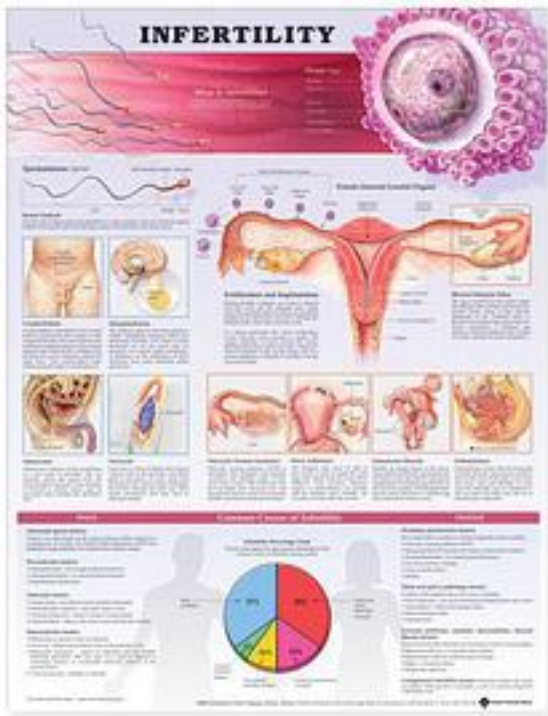


Infertility Anatomical Chart



[Infertility Anatomical Chart 下载链接1](#)

著者:Anatomical Chart Company

出版者:Lippincott Williams & Wilkins

出版时间:2004-12

装帧:Pap

isbn:9781587798597

Completely updated, this chart defines infertility; illustrates an ovum (egg) and spermatozoon (sperm); defines semen analysis; illustrates female internal genital organs and early cell division of a zygote; and describes and shows fertilization and implantation and blocked fallopian tubes. The chart lists common causes of infertility in both men and women. A pie chart graphic depicts the approximate distribution of common causes of infertility among men and women, including unexplained causes. The following causes of infertility are illustrated and described: For men: cryptorchidism, hypopituitarism, obstruction, and varicocele For women: polycystic ovarian syndrome (PCOS), pelvic adhesions, intrauterine fibroids, and endometriosis

作者介绍:

目录:

[Infertility Anatomical Chart_下载链接1](#)

标签

评论

[Infertility Anatomical Chart_下载链接1](#)

书评

[Infertility Anatomical Chart_下载链接1](#)