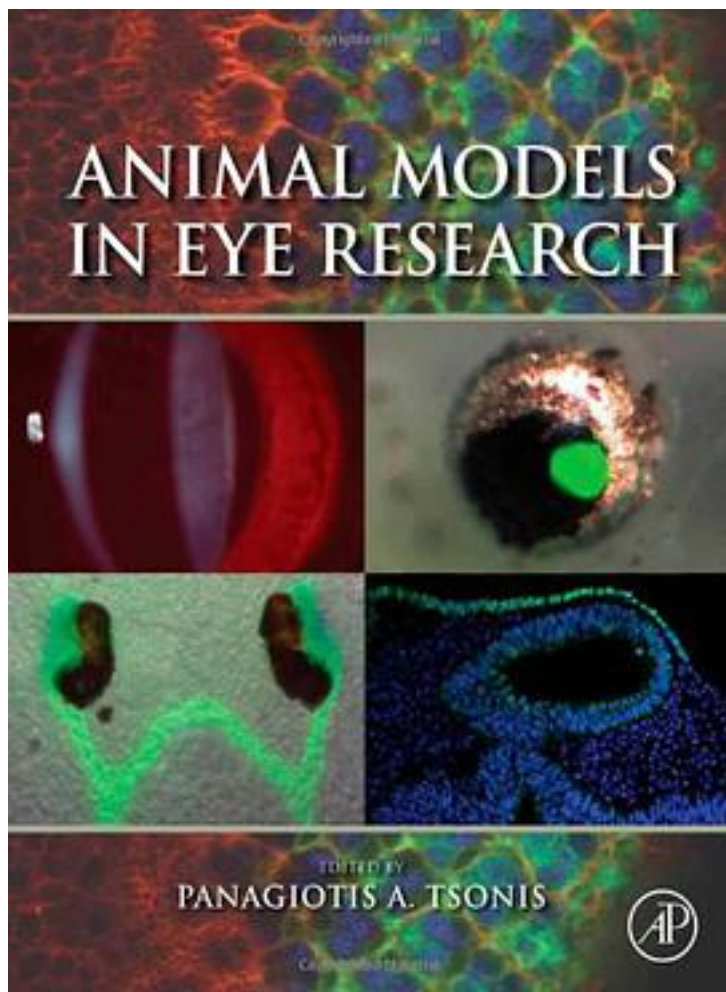


Animal Models in Eye Research



[Animal Models in Eye Research_下载链接1](#)

著者:Tsonis, Panagiotis Antonios 编

出版者:

出版时间:2008-9

装帧:

isbn:9780123741691

The eye is a complex sensory organ, which enables visual perception of the world. Thus the eye has several tissues that do different tasks. One of the most basic aspects

of eye function is the sensitivity of cells to light and its transduction through the optic nerve to the brain. Different organisms use different ways to achieve these tasks. In this sense, eye function becomes a very important evolutionary aspect as well. This book presents the different animal models that are commonly used for eye research and their uniqueness in evaluating different aspects of eye development, evolution, physiology and disease.

- * Presents information on the major animal models used in eye research including invertebrates and vertebrates
- * Provides researchers with information needed to choose between model organisms
- * Includes an introductory chapter on the different types of eyes, stressing possible common molecular machinery

作者介绍:

目录:

[Animal Models in Eye Research_ 下载链接1](#)

标签

评论

[Animal Models in Eye Research_ 下载链接1](#)

书评

[Animal Models in Eye Research_ 下载链接1](#)