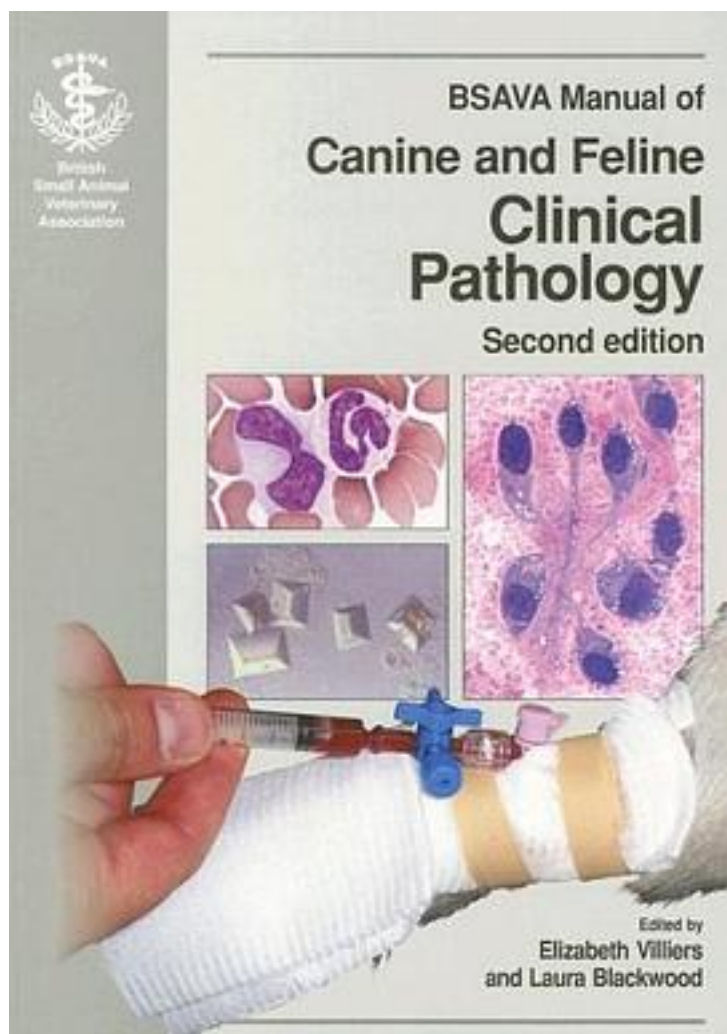


# BSAVA Manual of Clinical Pathology



[BSAVA Manual of Clinical Pathology\\_下载链接1](#)

著者:Elizabeth Villiers

出版者:British Small Animal Veterinary Association

出版时间:2005-4-1

装帧:Paperback

isbn:9780905214795

Clinical Pathology forms the cornerstone of veterinary internal medicine. This second

edition of the BSAVA Manual of Canine and Feline clinical Pathology builds on the strengths of the first edition and incorporates new information. It answers essential questions for busy clinicians in general practice: ? Which tests should be done? ? How should they be carried out? ? How do I get the best samples? ? How should I interpret the results? Biochemical tests are discussed in a clinical setting. Individual chapters feature important body systems or organs that have particular clinicopathological profiles (renal, hepatic, gastrointestinal, pancreatic and skin), while separate chapters cover proteins and electrolytes. Blood gas analysis and urinalysis are also discussed in detail in dedicated chapters. Clinical case examples illustrate how test selection and interpretation are used in real cases, and give readers the opportunity to apply for themselves the information presented in the chapters. Clinical case examples illustrate how test selection and interpretation are used in real cases, and give readers the opportunity to apply for themselves the information presented in the chapters. Cytology is a vital and growing part of clinical pathology, and a large chapter reviews both sampling and interpretation. Chapters on body cavity effusions, CSF analysis, joint and muscle disease, and skin disorders include both biochemical and cytological information. The role of clinical pathology in the diagnosis of infectious diseases is also summarized, with helpful explanations of PCR and MIC. Quick reference appendices summarize the samples required for common tests and list differential diagnoses for many of the abnormalities discussed in detail elsewhere in the book. A major feature of the book are the amazing colour photos which enable the reader to identify normal and abnormal blood cells and cytological changes in a range of conditions. As a team of one clinical pathologists and one clinician, the Editors have created a truly useful manual for clinicians, budding clinical pathologists and veterinary students.

作者介绍:

目录:

[BSAVA Manual of Clinical Pathology 下载链接1](#)

标签

诊断

宠物

实验室

化验

兽医

## 评论

非常棒，但是要记住相当不容易，化验室最大的特点就是诊断的可靠性必须由人决定，所以自己要看熟透才行。

-----  
[BSAVA Manual of Clinical Pathology\\_下载链接1](#)

## 书评

-----  
[BSAVA Manual of Clinical Pathology\\_下载链接1](#)